

VELA

)C *Dorchester Collection*

DUBAI

by OMNIYAT

SUBLIME

*The doorway to an elevated way of life,
immersed in beauty and surrounded by energy*

Bringing together the vibrancy of Downtown Dubai with the peace and prestige of the Marasi Bay, VELA, Dorchester Collection, Dubai, is a sublime celebration of contemporary waterfront living and a new way of knowing the very best of Dubai.

Here, within the wonderful care of Dorchester Collection's legendary service, a lifestyle of comfort and ease awaits. Where inspiring architecture, spacious design and wonderful views meet to create a place of true beauty, it's time to look up, to relax, and to feel the spirit soar.





RESIDENCE DETAILS

PROJECT NAME:	VELA, Dorchester Collection, Dubai	PRICE:	Provided Upon Request
UNIT OF INTEREST:	101	TOTAL SIZE:	7,338 sq. ft.
FLOOR:	1 st	PARKING:	3
BEDROOMS:	4	VIEWS:	Burj Khalifa / Marina

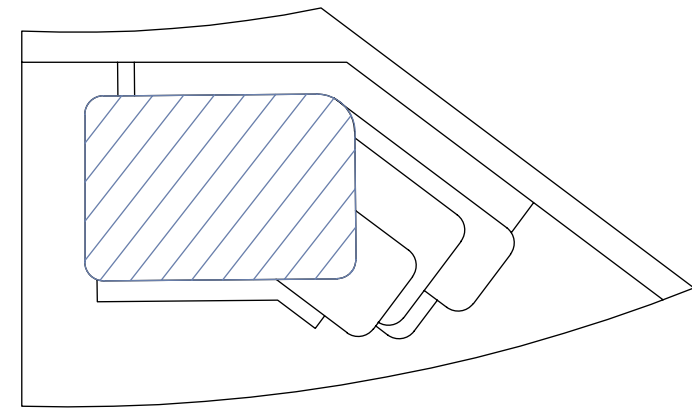
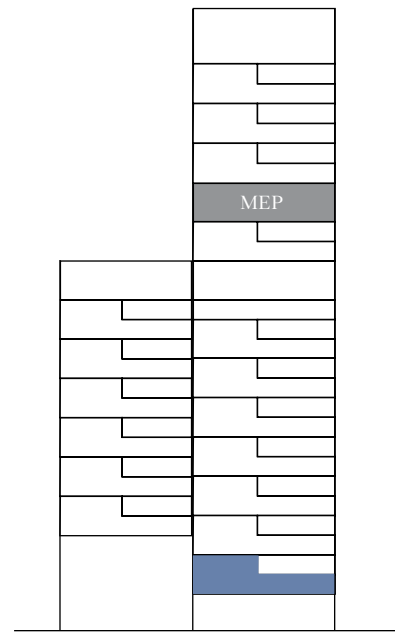
PAYMENT PLAN

Installment No.	Payment Milestone	Payment (%)
1	Booking Form Effective Date - Secured by Managers Cheque	5%
2	On SPA effective date	20%
3	12 Months from SPA effective date	10%
4	18 Months from SPA effective date	5%
5	24 Months from SPA effective date	5%
6	30 Months from SPA effective date	5%
7	36 Months from SPA effective date	10%
8	On project completion date	40%
	Total	100%

VELA

Dorchester Collection

DUBAI



MARINA RESIDENCES 101

4 Bedrooms Double Height Living with Pool
3 Parking spaces

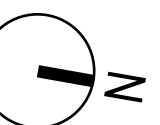
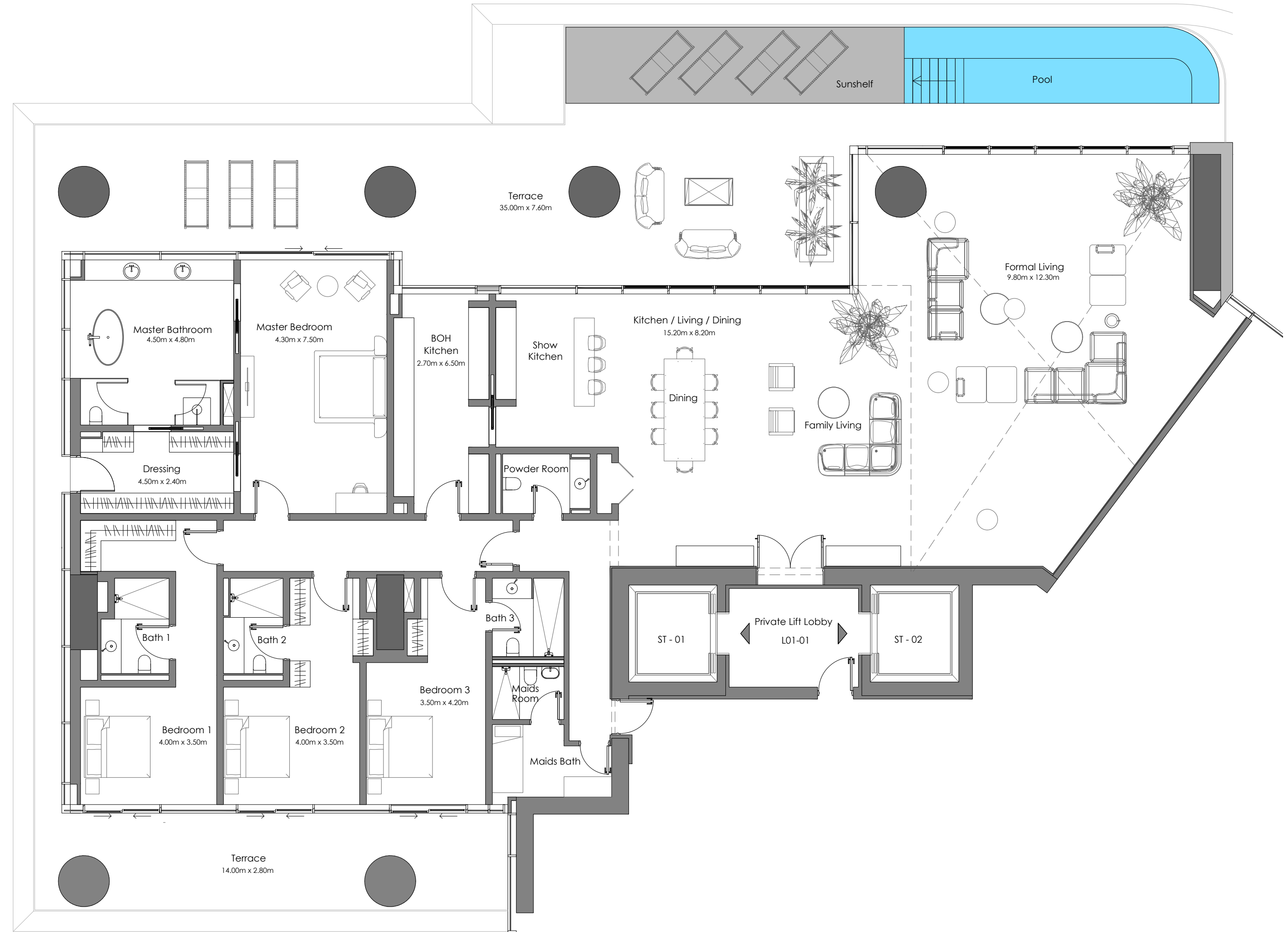
Residence Area:	4,897.79 sq.ft	455.02 sq.m
Terrace Area:	2,440.07 sq.ft	226.69 sq.m
Total Area:	7,337.87 sq.ft	681.71 sq.m



Marasi Marina



Burj Khalifa



OMNIYAT